

SPEC SHEET + MEASUREMENTS



Russell Outdoors™ Realtree® Performance Colorblock Pullover Hoodie. RU451

Product photo



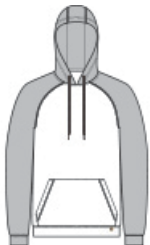
This pullover's a perfect moisture-wicking mid-layer, ready to throw on over a tee or under a vest for everyday wear and easy comfort. Plus, the Realtree EDGE® print makes it a favorite of anyone who enjoys showing how much they love time in the outdoors.

- 6.5-ounce, 100% polyester with moisture-wicking
- Tag-free label
- Realtree EDGE® print
- Hood with metal grommets and tips on dyed-to-match round cords
- Front pouch pocket
- Exterior woven Russell Outdoors™ tab at hem

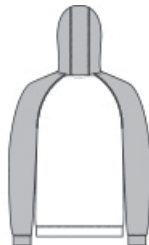
CARE INSTRUCTIONS

Machine Wash Cold With Like Colors. Do Not Use Fabric Softener. Do Not Bleach. Tumble Dry Low. Remove Promptly. Cool Iron If Needed.

Sketches



front



back

SPEC SHEET + MEASUREMENTS



Russell Outdoors™ Realtree® Performance Colorblock Pullover Hoodie. RU451

PRODUCT MEASUREMENTS

	XS	S	M	L	XL	2XL	3XL	4XL
Body Length at Back	27 1/2	28 1/2	29 1/2	30 1/2	31 1/2	32 1/2	33	33 1/2
Chest	18 1/2	20	21 1/2	23	24 1/2	26	28	30
Raglans and Dolmans Sleeve Length	34 1/4	35	35 3/4	36 1/2	37 1/4	38	38 3/4	39 1/2

Body Length at Back: Measured from high point shoulder to finished hem at back.

Chest: Measured across the chest one inch below armhole when laid flat.

Raglans and Dolmans Sleeve Length: Measure from neck edge to finished hem.

SIZE CHARTS

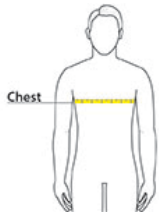
	XS	S	M	L	XL	2XL	3XL	4XL
Chest	32-34	35-37	38-40	41-43	44-46	47-49	50-53	54-57

SPEC SHEET + MEASUREMENTS



Russell Outdoors™ Realtree® Performance Colorblock
Pullover Hoodie. RU451

HOW TO MEASURE



CHEST

Measure under the arm and around the fullest part of the chest with arms down, keeping tape horizontal.

COLORS



Black/
Realtree Edge
PMS BLACK
C



Magnet/
Realtree Edge
PMS 7540C



Olive Drab
Green/
Realtree Edge
PMS 7771C